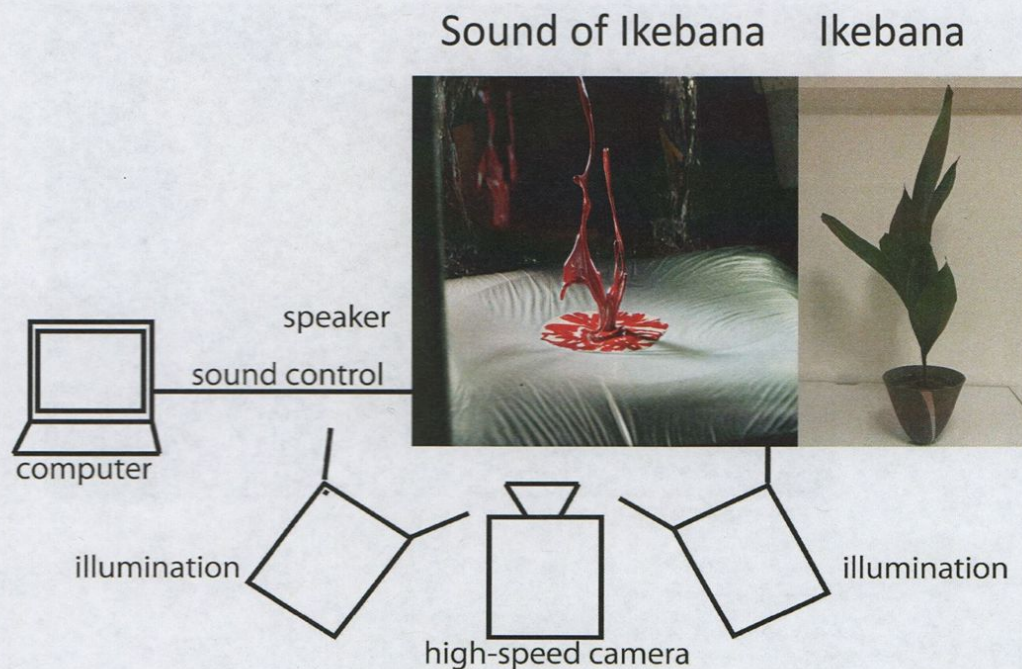


What is "Sound of Ikebana" which is invisible to our naked eyes? by Naoko Tosa

The basic form of Ikebana is an asymmetric triangle, like the right photo below. A high-speed camera with a speed of 2000 frames/second captures a liquid placed on the speaker and vibrated with sound. As shown in the left photo below, a shape like Ikebana is created.

I named it "Sound of Ikebana" because Ikebana is born from the sound. Please look at the shape of the Sound of Ikebana that you have never seen before. Fashions born from the Sound of Ikebana are also exhibited.



Examples of flowers in the four seasons expressed by the Sound of Ikebana



An Expression (1985)

Presentation/Collection: Museum of Modern Art, New York

Overview: The reason I entered this field was when my video art, "An Expression," which was created at the age of 24 and which converted images into sound, was included in the special exhibition "New Video Japan" at the Museum of Modern Art, New York. In this work, along with various facial expressions (An Expression) using video effects, sounds are generated in real time, which is determined by the video's brightness. For example, the color of the wipes on the screen generates sound.

The URL of the video: <http://tosa.gsais.kyoto-u.ac.jp/art/an-expression/>

MoMA

[Reserve timed tickets](#)

[Becc](#)

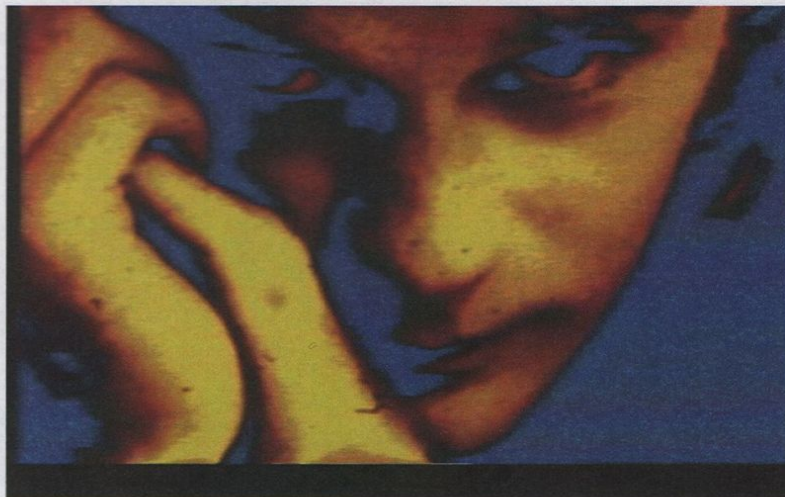
[Plan your visit](#)

[What's on](#)

[Art and artists](#)

[Store](#)

[Q](#)



Naoko Tosa
An Expression
1985

Not on view

Medium
Video (color, sound)

Naoko Tosa has 1 work online.

Duration
9 min.

There are 2,057 videos online.

Credit
Purchase

Object number
542.1986

Copyright
© 2021 Naoko Tosa

